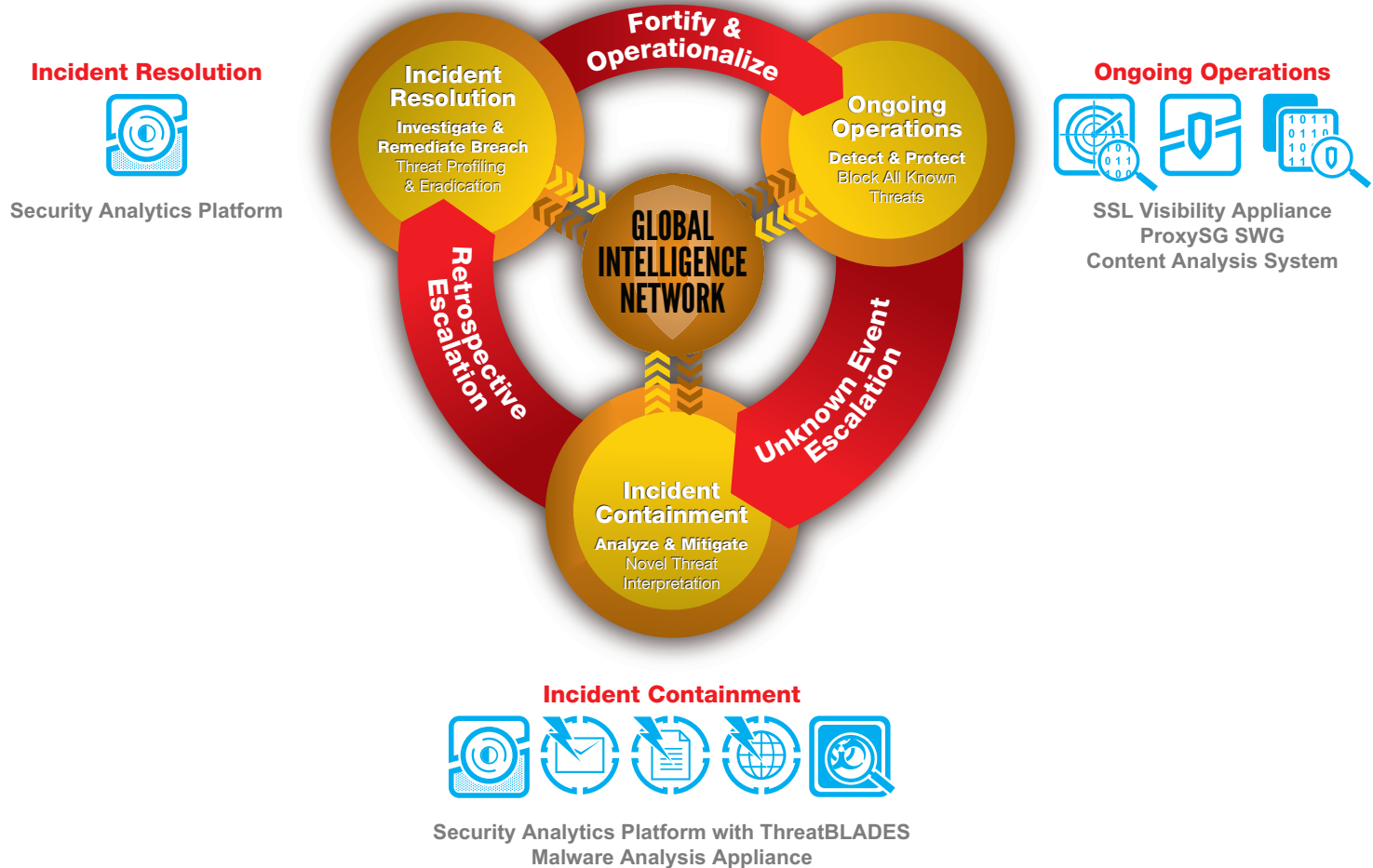




Advanced Threat Protection: LIFECYCLE DEFENSE

Blue Coat Advanced Threat Protection

Delivering a comprehensive, integrated and modern approach to advanced persistent threats, advanced targeted attacks, advanced malware, unknown malware and zero-day threats through its Advanced Threat Protection Lifecycle Defense.



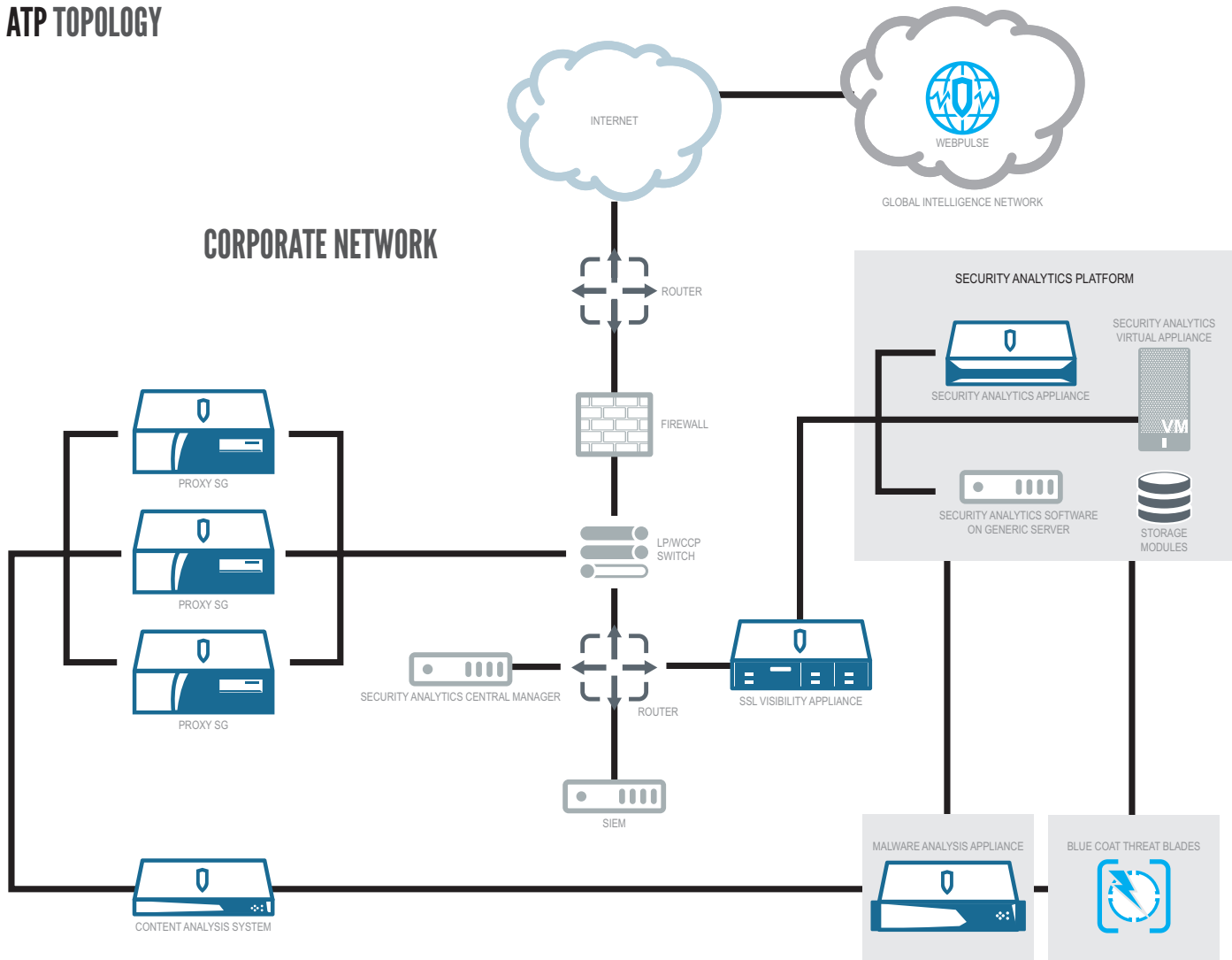
ONGOING OPERATIONS	INCIDENT CONTAINMENT	INCIDENT RESOLUTION
<p>Detect and block known threats as part of routine, day-to-day operations. Unknown threat events are escalated to Incident Containment.</p>	<p>Analyze unknown threats in controlled isolation with advanced sandboxing to identify and profile malicious activity. Then share new profiles to inoculate against future attacks.</p>	<p>Investigate breaches in depth to determine the source and scope of attacks, identify the scale of impact on the organization, and remediate weak points to prevent future threats.</p>
<p>BLUE COAT SOLUTION</p> <ul style="list-style-type: none"> ProxySG Secure Web Gateway Content Analysis System SSL Visibility Appliance 	<ul style="list-style-type: none"> Security Analytics Platform with ThreatBLADES Malware Analysis Appliance 	<ul style="list-style-type: none"> Security Analytics Platform

© 2014 Blue Coat Systems, Inc. All rights reserved. Blue Coat, the Blue Coat logos, ProxySG, PacketShaper, CacheFlow, IntelligenceCenter, CacheEOS, CachePulse, Crossbeam, K9, the K9 logo, DRTR, Mach5, Packetwise, Policycenter, ProxyAV, ProxyClient, SGOS, WebPulse, Solera Networks, the Solera Networks logos, DeepSee, "See Everything. Know Everything.", "Security Empowers Business", and BlueTouch are registered trademarks or trademarks of Blue Coat Systems, Inc. or its affiliates in the U.S. and certain other countries. This list may not be complete, and the absence of a trademark from this list does not mean it is not a trademark of Blue Coat or that Blue Coat has stopped using the trademark. All other trademarks mentioned in this document owned by third parties are the property of their respective owners. This document is for informational purposes only. Blue Coat makes no warranties, express, implied, or statutory, as to the information in this document. Blue Coat products, technical services, and any other technical data referenced in this document are subject to U.S. export control and sanctions laws, regulations and requirements, and may be subject to export or import regulations in other countries. You agree to comply strictly with these laws, regulations and requirements, and acknowledge that you have the responsibility to obtain any licenses, permits or other approvals that may be required in order to export, re-export, transfer in country or import after delivery to you.



Block. Analyze. Remediate.

ATP TOPOLOGY



Summary: Benefits and Advantages

Blue Coat is the only company that provides a business-process oriented approach that integrates ongoing operations with threat detection, incident containment and resolution. The table below summarizes the business advantages of the Blue Coat Advanced Threat Protection Solution.

BUSINESS-PROCESS ORIENTED DEFENSE	The lifecycle approach aligns defenses to the business process for operationalizing new threat intelligence to fortify the security infrastructure.
SCALABLE, EFFECTIVE DEFENSE AGAINST ZERO-DAY THREATS AND UNKNOWN MALWARE	Through the Advanced Threat Protection Lifecycle Defense, unknown threats become known threats so protection against future attacks can be shifted to the gateway.
GLOBAL AND LOCAL SHARING OF THREAT INTELLIGENCE	At each stage of the lifecycle defense, new threat intelligence is shared both locally across the security infrastructure and globally across 15,000 customers and their 75 million users to create a network effect.
OPTIMIZED SECURITY INFRASTRUCTURE INVESTMENTS	The Blue Coat Advanced Threat Protection solution integrates into your existing security infrastructure to provide a stronger defense in-depth strategy against advanced attacks and malware.

LEARN MORE AT THE ATP RESOURCE CENTER: bluecoat.com/atplifecycle